

TIME FOR BAMBOO & RATTAN



hfriederich@inbar.int

www.inbar.int

















D.N. Tewari



Zhu Zhaohua



DN1000mm



DN600mm



DN600mm





- **SDG 1:** End poverty in all its forms everywhere
- **SDG 7:** Ensure access to affordable, reliable, sustainable and modern energy for all
- **SDG 11:** Make cities and human settlements inclusive, safe, resilient and sustainable
- **SDG 12:** Ensure sustainable consumption and production patterns
- **SDG 13:** Take urgent action to combat climate change and its impacts
- **SDG 15:** Protect, restore and promote the sustainable use of terrestrial ecosystems, sustainably manage forests, combat desertification, halt and reverse land degradation, and halt biodiversity loss
- **SDG 17:** Strengthen the means of implementation and revitalize the global partnership for sustainable development

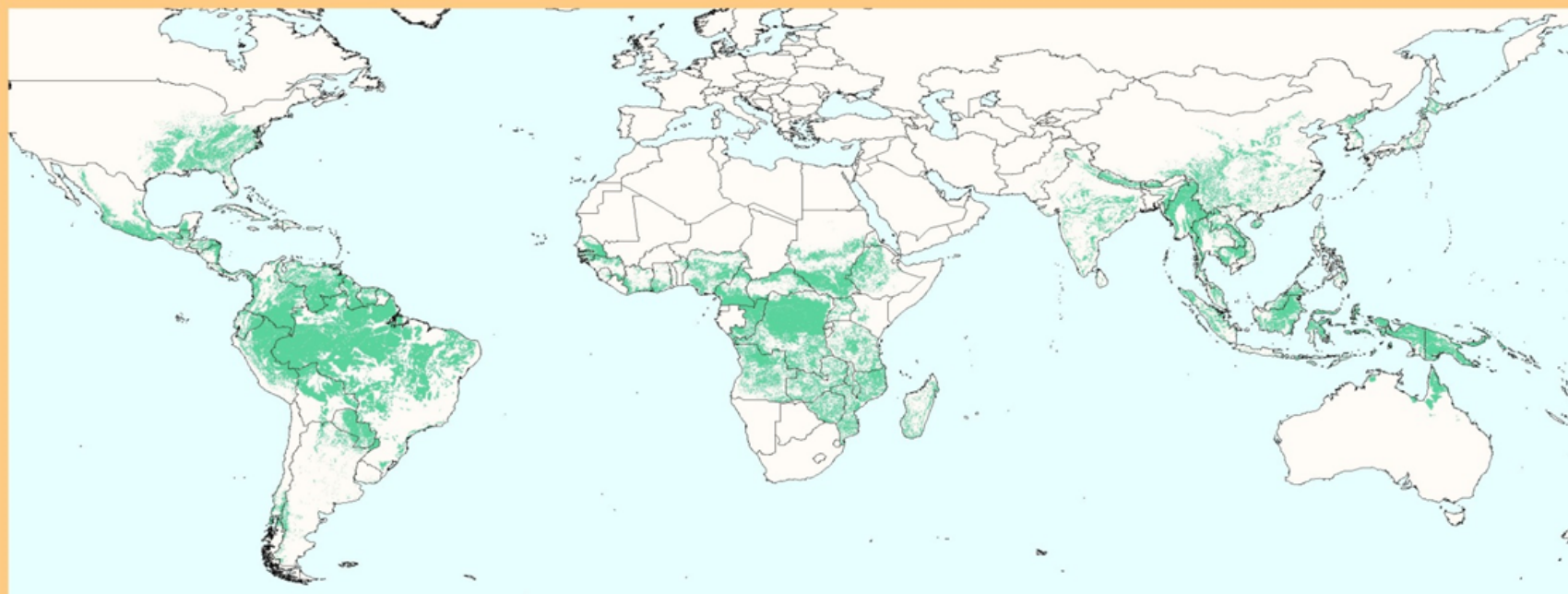






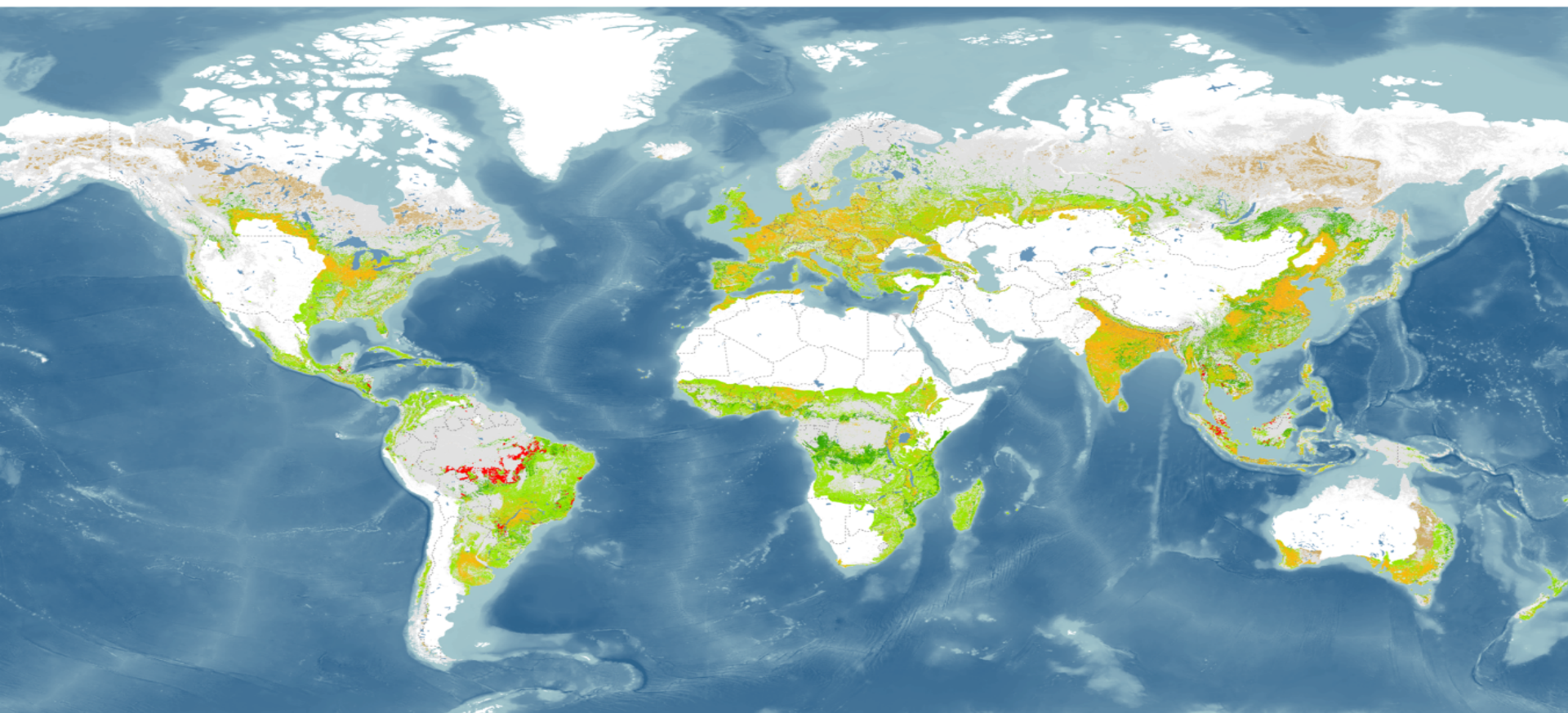
The Green School, Bali

Global map of potential distribution of bamboo within existing forest cover



 Potential distribution of bamboo within existing forest cover

A World of Opportunity for Forest and Landscape Restoration



FOREST AND LANDSCAPE RESTORATION OPPORTUNITIES

- Wide-scale restoration
- Mosaic restoration
- Remote restoration

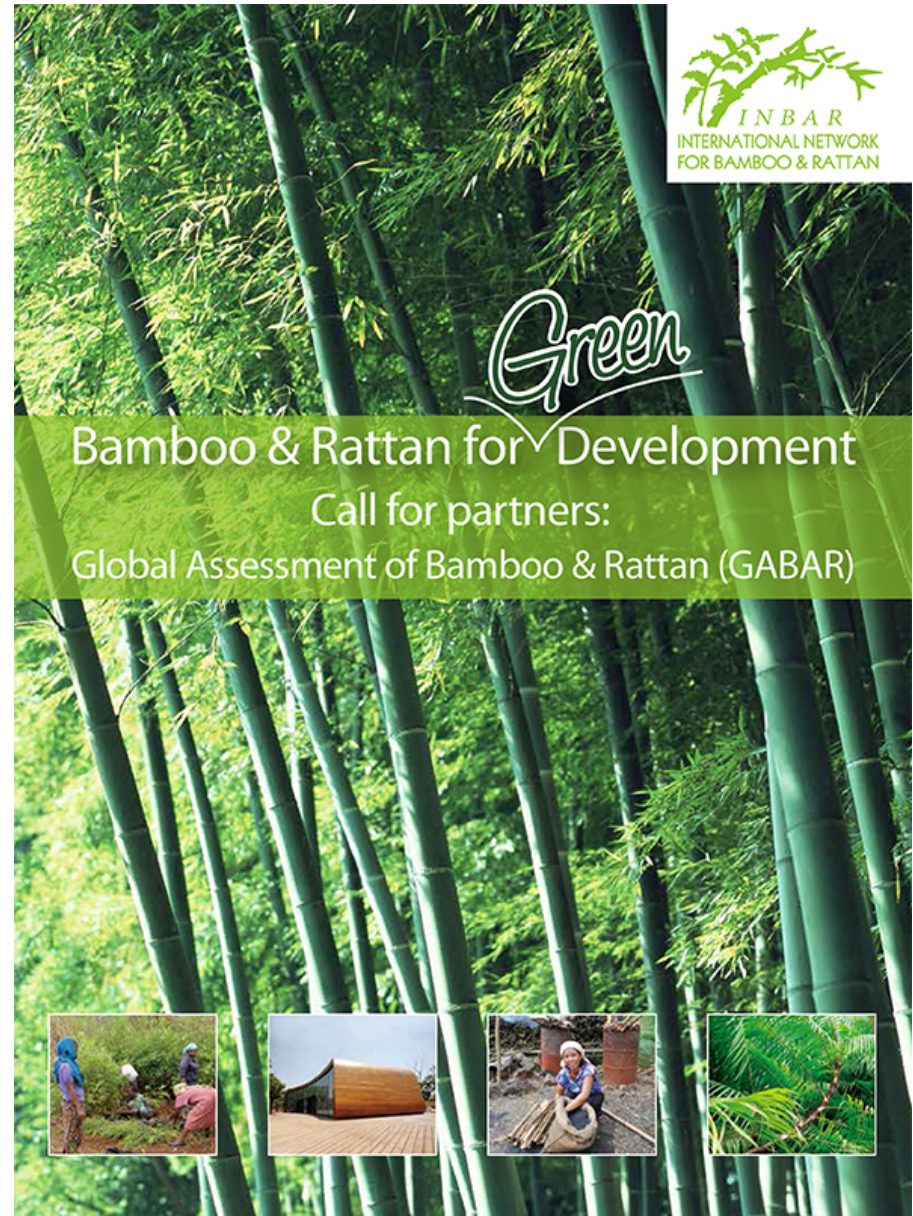
OTHER AREAS

- Agricultural lands
- Recent tropical deforestation
- Urban areas
- Forest without restoration needs



Planned as a USD100 million programme, which will deliver a full range of support to countries:

- Knowledge sharing
- Capacity building
- Policy shaping
- Technical advice.



Launching GABAR at World Forestry Congress



- 17.5 million people in China
- Provide renewable energy (SDG7)
 - Bamboo charcoal is sustainable and clean
- Building material (SDG11)
 - Bamboo bends; it does not break
 - Resilient to natural disasters
- Promote sustainable production (SDG 12)
 - Global trade USD60 Billion
- Combat climate change (SDG 13)
 - Bamboo is a carbon sink
- Restore ecosystems (SDG 15)
 - Healthy rattan needs healthy forests
 - Bamboo restored 80,000 Ha in India

Launch meeting co-hosted by
INBAR and State Forestry Administration of the People's Republic of China

GABAR - Global Assessment of Bamboo and Rattan

GABAR is a partnership of INBAR and its 41 Member States, with a range of national and international partners.





Chishui County, Guizhou Province

Total plantation: 38,466 h. of which 30,066 ha bamboo plantation.

Species: *Dendrocalamus farinosus* and *Bambusa rigida*

Before planting



After 8 years













TELL US ABOUT YOUR GOOD WORK WITH BAMBOO AND RATTAN. WE'D LIKE TO TELL THE WORLD.



Do you have innovations, expertise or ideas to share on bamboo and rattan development?

GABAR welcomes contributions to the knowledge base of the Global Assessment of Bamboo and Rattan.

- **Published research**, technical reports and studies
- **Project results** and case studies
- **Technologies**, innovative products and designs with bamboo and rattan
- **Business models** and examples of value chains for bamboo and rattan products
- **Links to useful information** (web services, maps, data, etc.)

Open to all organizations, experts, enthusiasts

A wealth of practical information exists in national forestry, agriculture, research and academic organizations, and with specialists and practitioners worldwide. The GABAR knowledge base provides a platform where this information can be easily found and widely shared.

How to contribute

A web platform will soon be ready for sharing information.

Today you can send your questions, comments or information to gabar@inbar.int

All contributions remain the property of the author or contributing organization, who will receive full credit.

GABAR - Global Assessment of Bamboo & Rattan

Global Green
Development
Agenda

**Conventions,
Global Initiatives**

**Development
Partners Agendas**

**Regional Strategies
& Action Plans**

National Plans
Statistics, economics,
bamboo & rattan
added value

Evidence,
learning
& Scenarios

Knowledge & Evidence Base

- . **State of Bamboo & Rattan** (global, regional, local)
- . **Country info & Assessments**
- . **Capacity Building and Training**
- . **Economic Assessments**
- . **Investment Options** (ecosystems, livelihoods)
- . **Green Economy Strategies & Solutions**

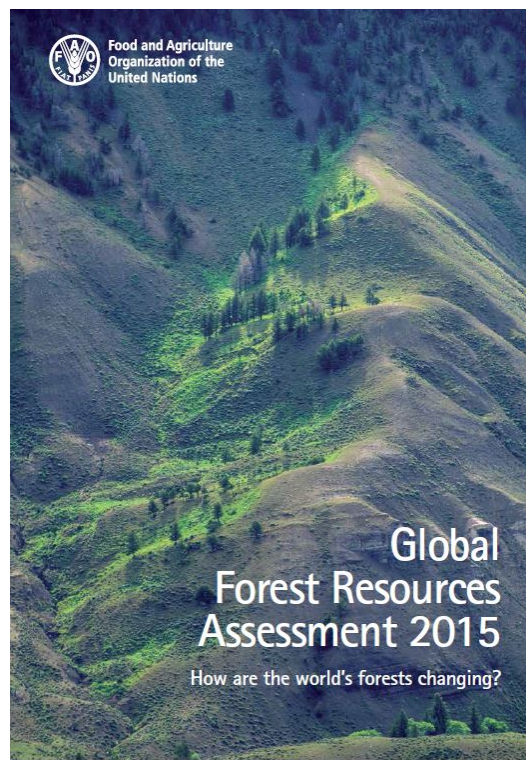
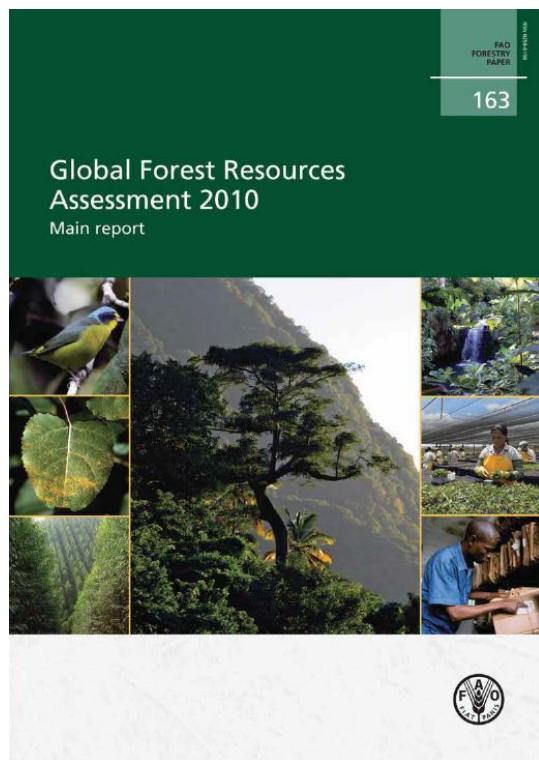
Bamboo & Rattan
Experts & Partners
Worldwide

Global Inventory

Evidence & Expertise
Demonstration projects

**South-South Collaboration
& Learning**

I N B A R , M e m b e r s , P a r t n e r s



Forest Resources Assessment 2020

GABAR
2020



Strategy 2015-2030



International Network for Bamboo and Rattan

From Research to Development

**INBAR provides services and expertise
for countries and development partners for
environmental security and improved
rural livelihoods.**

Argentina, Bangladesh, Benin, Bhutan, Burundi, Cameroon, Canada, Chile, China, Colombia, Cuba, Ecuador, Eritrea, Ethiopia, Ghana, India, Indonesia, Jamaica, Kenya, Madagascar, Malawi, Malaysia, Mozambique, Myanmar, Nepal, Nigeria, Panama, Peru, Rwanda, The Philippines, Senegal, Sierra Leone, Sri Lanka, Suriname, Tanzania, Togo, Tonga, Uganda, Venezuela and Viet Nam.

- Policy influence
- Capacity building
- Information management
- Applied field research





- High-level meeting in Beijing, China
- Technical forum in Sichuan Province, China
- Details to be confirmed
- Interim report GABAR
- First results of Strategy



WORLD
BAMBOO
CONGRESS
DAMYANG, KOREA