



Bamboo Village (Baoxi) and Earth Clusters (Yongding):

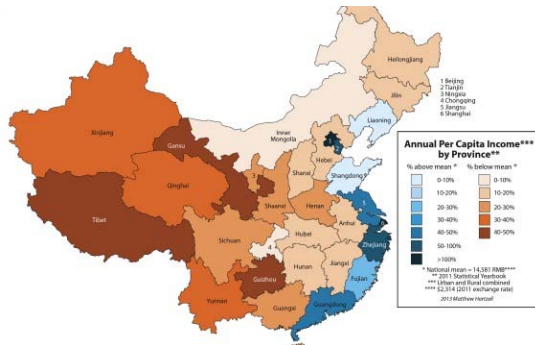
The use of bamboo and earth materials as symbols of rural sustainable development in China



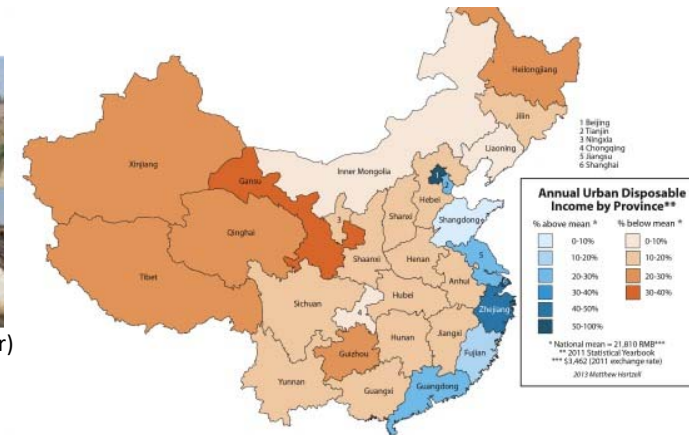
Dr Rosangela Tenorio



“The economic gap (income inequality) between coastal and inland parts of the country is just as important—if not more so—than the urban/rural divide” Schiavenza 2013



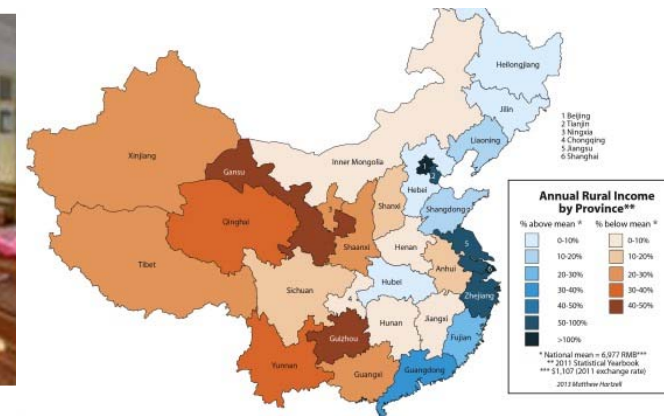
Gansu project (Photos by Author)



CHINA RURAL SCENARIO: SEEKING INNOVATIVE MODELS FOR FAST DEVELOPMENT



Gansu project (Photos by Author)



ECO-ARCHITECTURE & ECO-MODELS FOR RURAL DEVELOPMENT

BAMBOO & EARTH:

Purchase PDF Export



The role of bamboo plantations in rural development:

The case of Anji County, Zhejiang, China

Manuel Ruiz Pérez, Zhong Maogong, Brian Belcher, Xie Chen, Fu Maoyi, Xie Jinzhong *

Sustainable Development for Bamboo Industry in Anji, Zhejiang Province of China

Shan Chen, Zhong Zheng and Pingsha Huang

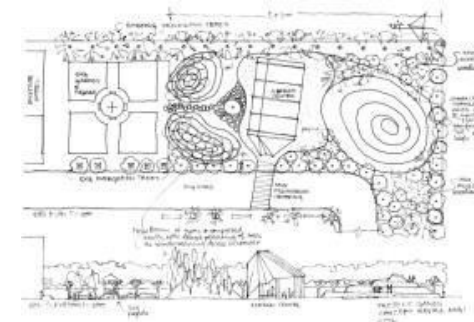
ABSTRACT

This study introduced the distribution and the development of bamboo industry in Anji County, Zhejiang Province of China and analyzed the problems of bamboo industry in resource utilization and environmental impact in Anji County. Based on the analysis, the main findings of the environmental issues of bamboo industry were inefficient utilization of bamboo resource, discharge of unthreatened wastewater and large amount of solid wastes, while the process dust,

Circular Economies



人效效果图 (二)



Gansu project (design proposals)

Gansu Project: UNNC Students/Staff in partnership with Tianjin Design Institute/Nina Maritz Architects Namibia TENORIO, R. YANG, T., ORO, B. "Gansu Studio: 'Plug-in' School Unit for Rural China. Asia & America Latina Journal, (Forthcoming Issue No.5/2018), December 2018 www.asiaamericalatina.org.





Baoxi Village, (Photos by Author)

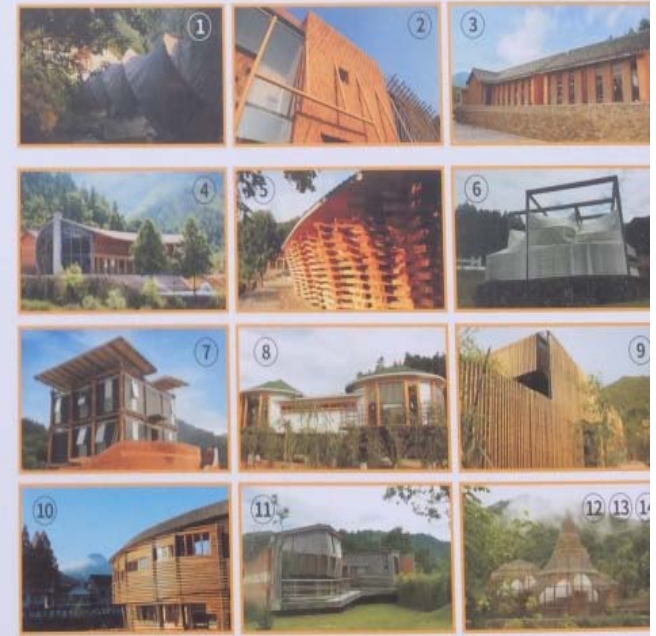
XITOU VILLAGE OF BAOXI (Bamboo Village)
Zhejiang Province



国际竹建筑文创生活村落

The International Cultural and Creative Bamboo Village

- ① 双螺旋石拱桥 [中]葛千涛
Double Helix Bridge / Ge Qiantao
- ② 陶艺家工作坊 [日]前田圭介
Invited Ceramist Workshop / Keisuke Maeda
- ③ 传统青瓷作坊 [美]国广乔治
Existing Ceramic Workshop / George Kumihara
- ④ 接待中心 [越]武重义
Welcome Center / VO Trong Nghia
- ⑤ 当代青瓷艺术馆 [日]隈研吾
Contemporary Celadon Ceramic Museum / Kengo Kuma
- ⑥ 竹坞·童心手作体验屋 [韩]Wise工作室
Bamboo · Children's Handmade Workshop / Young Jang & Sook Hee Chun
- ⑦ 低耗能示范竹屋 [意]马儒骁
Eco Energy Efficient Experimental House / Mauricio Cardenas Laverde
- ⑧ 精品酒店 [哥伦比亚]西蒙·韦莱斯
Boutique Hotel / Simon Velez
- ⑨ 创空间 [中]李晓东
Creative and Innovation Center / Li Xiaodong
- ⑩ ⑪ 艺术酒店 [中]杨旭
Art Hotel / Yang Xu
- ⑫ ⑬ 青年旅社 [德]安娜·海瑞格
Youth Hostel / Anna Heringer
- ⑭ 设计酒店 [德]安娜·海瑞格
Design Hotel / Anna Heringer



Anna Heringer, Kengo Kuma, Simon Velez amongst others

Baoxi Village, (Photos by Author)



Baoxi Village, (Photos by Author)

XITOU VILLAGE OF BAOXI (Bamboo Village) Zhejiang Province

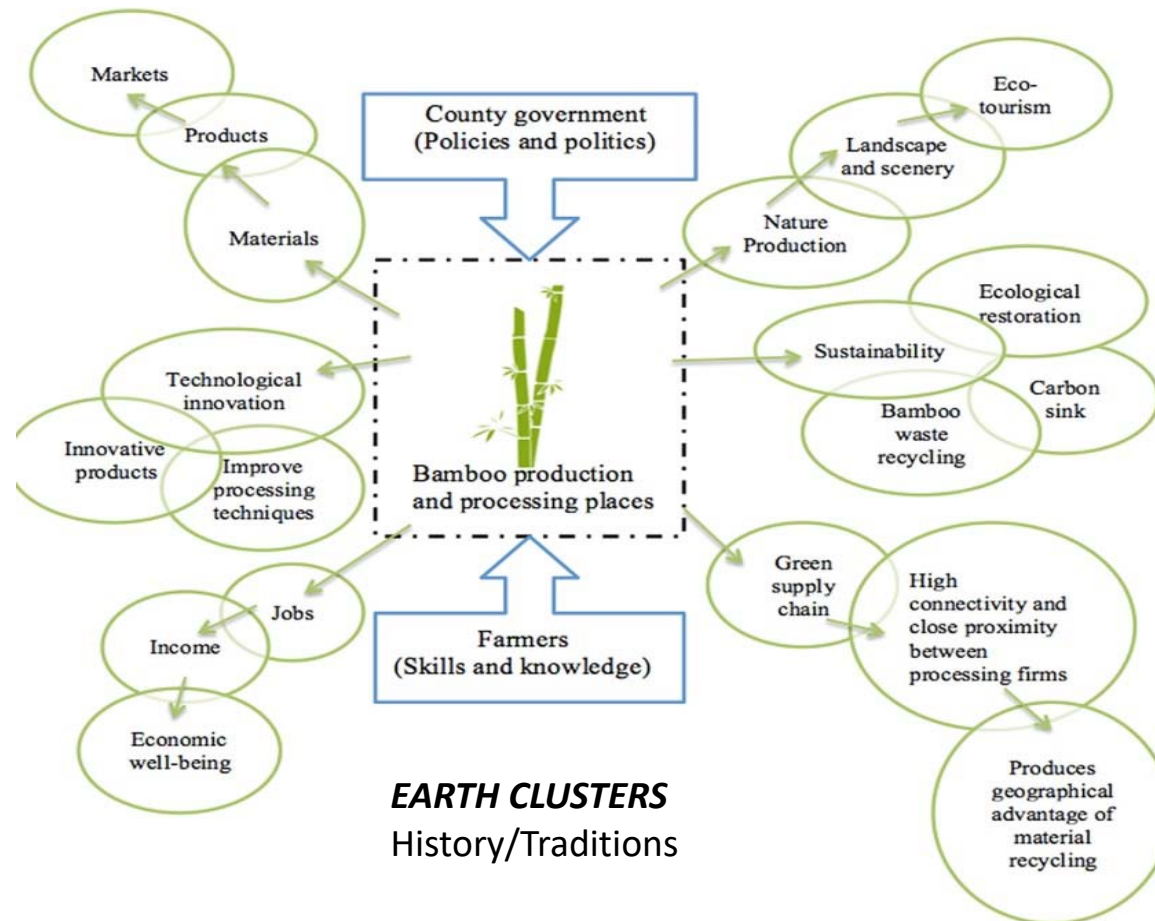


Yonding & Nanjing clusters, Fujian (Photos by Author)



Yonding & Nanjing clusters, Fujian (Photos by Author)

THE TULOUS' EARTH CLUSTERS: Fujian Province



EARTH CLUSTERS

History/Traditions

After Flynn et al 2017

Visual Construction of Sustainable Models in rural communities

Ethics & Challenges for Built Environment Professionals

“The authenticity of the tulou is related to sustaining the tulou themselves and their building traditions as well as the structures and processes associated with their farmed and forested landscape setting.

The integrity of the tulou is related to their intactness as buildings but also to the intactness of the surrounding farmed and forested landscape – into which they were so carefully sited in accordance with Feng Shui principles.”

UNESCO 2008

“Nature is used to generate economic value and to help to govern the population as farmers will remain in rural areas whilst they can be confident of high and increased standards of living. Over time, the contradictions between, production, processing and place, are expected to become more apparent and to form the making of a local model of sustainability every more challenging”.

(Flynn et al 2017)