



Get to know your host city Xalapa.

# 11th WORLD BAMBOO CONGRESS

Xalapa, Veracruz, Mexico  
August 14-18, 2018

## Welcome!

Join us August 14-18, 2018 for the 11th World Bamboo Congress. This global event will take place in the beautiful city of **Xalapa**, in the state of **Veracruz**, at the **Gamma Xalapa Nubara Hotel**. The host of the 11th WBC is the **Bambúes y Forestales de México**. The aim is to demonstrate the vast potential of bamboo in the Americas, and particularly Mexico, as well as showcase what's happening around the world in bamboo development.



**11th  
WORLD  
BAMBOO  
CONGRESS**

Xalapa, Veracruz, Mexico  
August 14-18, 2018

**DASSO INNOVATIONS:  
BAMBOO MANUFACTURING TECHNIQUES SPAN  
OVER 25 YEARS (1993 – 2018)**



“Creativity is not the finding of a thing, but the making of something out of it after it is found.”

- James Russel Lowell (1819 - 1891).

James Russel is an academic and writer.



Global Innovator of Moso Bamboo







# ***The Pioneers***

- Larry Lin
- Steve Shen
- John Xu
- Zhang Xiaoping







Here is some of our most dedicated workforce. 70% of them are women who form an important part of bamboo society.



Today, we have 9 factories producing wide range of products in the 6 main categories with a workfore of roughly 1 thousand people.











global innovator of bamboo products

[Home](#)

[Company](#)

[Bamboo](#)

[Products](#)

[Gallery](#)

[Blog](#)

[Contact](#)

[中文](#)



#### **dasso** Flooring

Traditional  
Strand Woven  
Pressed EcoSolid  
Solid  
Engineered

#### **dasso** XTR

Exterior  
Decking  
Siding  
Cladding  
Tiles

#### **dasso** Elements

Veneer  
Panels  
Sheet Goods  
Countertops  
Wear Surfaces

#### **dasso** Furnishings

Furniture  
Decorative  
Home  
Office  
Commercial

#### **dasso** Architectural

Ceilings  
Walls  
Decorative  
Sound  
Envision

#### **dasso** Innovations

Integrated  
Automotive  
Energy  
Industrial  
Imagination



# Why Bamboo?







“Rather live without meat than living without bamboo.”

What's eaten – bamboo shoots.

What's roof over the head – bamboo shingles.

What's traveled on – bamboo rafts.

What's cooked with – bamboo cores.

What's wearable on my body – bamboo cloths.

What's written on – bamboo scrolls.

What's put on – bamboo sandals.”

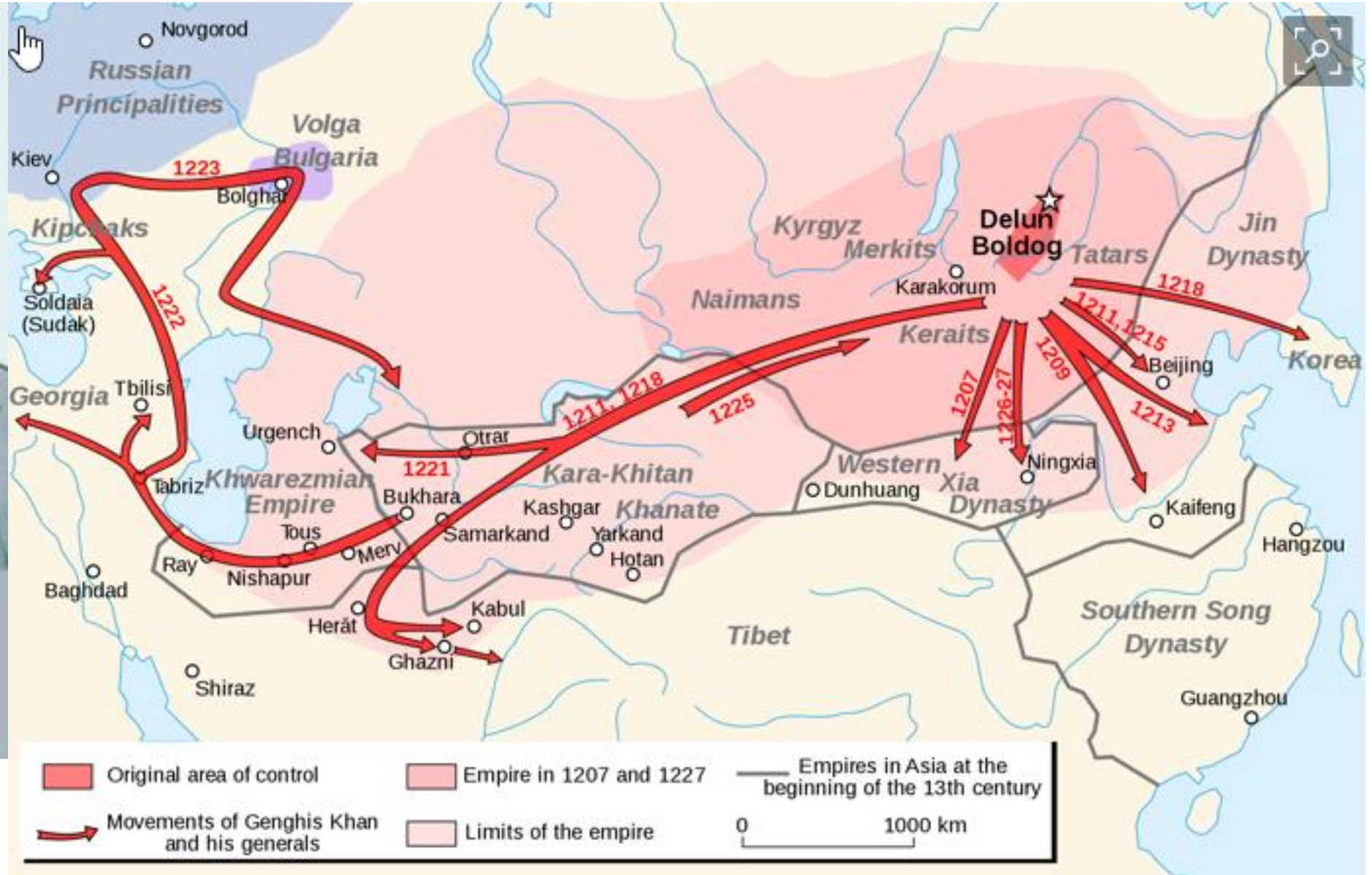
文明承载





Leo de Hartog

## GENGHIS KHAN Conqueror of the World





In 1976, Mao died & was succeeded by moderate Communist leaders

In 1978, Deng Xiaoping took over China & began new economic reforms



***The passing of an era...***

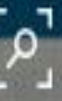


Socialism with Chinese Characteristics

~~CAPITALISM~~

SOCIALISM

Shanghai grows up in a hurry, going from a big but sleepy city to a thriving metropolis in 20 years



Shanghai 1990



Shanghai 2010







The most innovative tools of the time. One tool does it all - the Billhorn machete!!



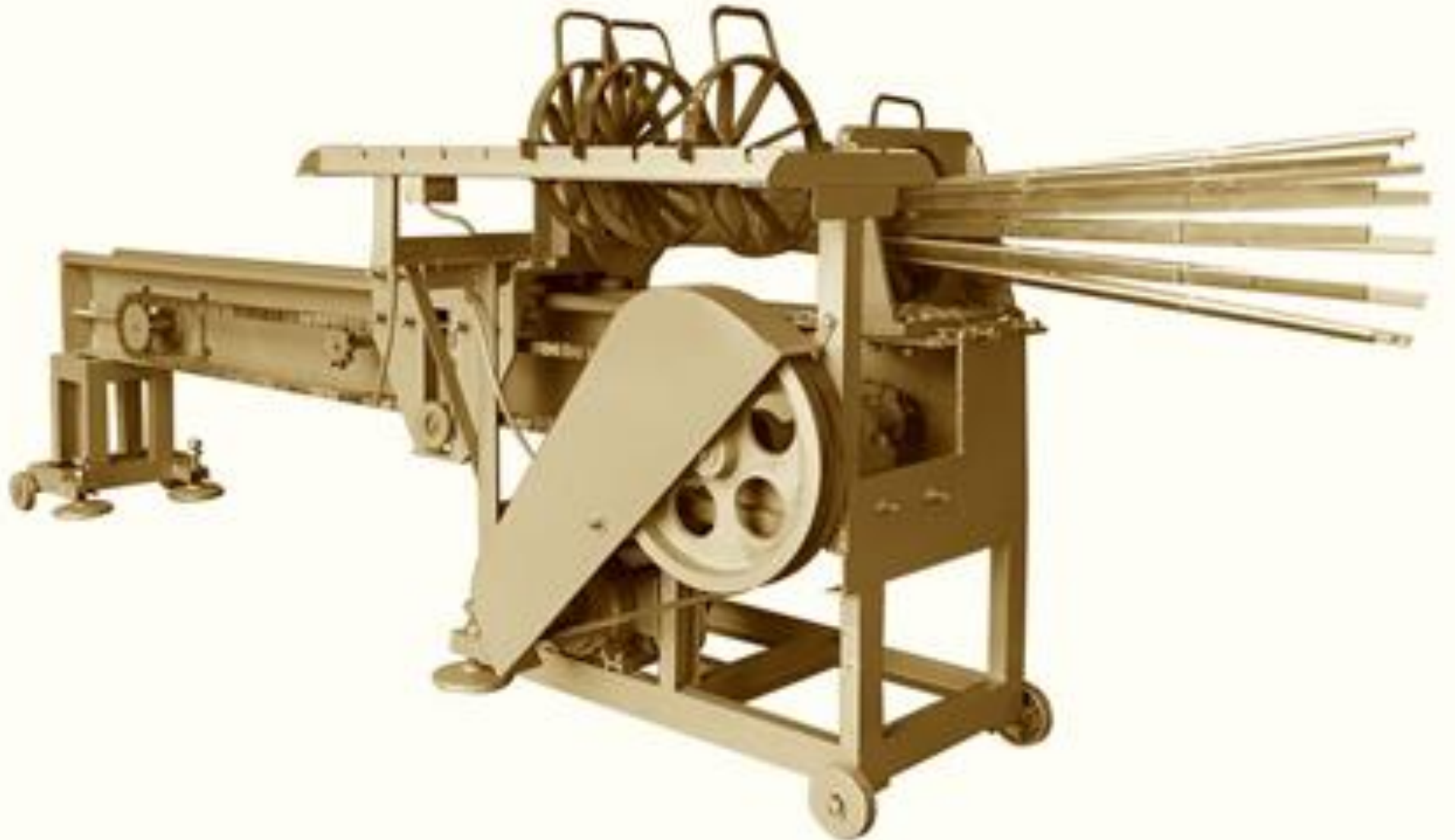


The old ways!

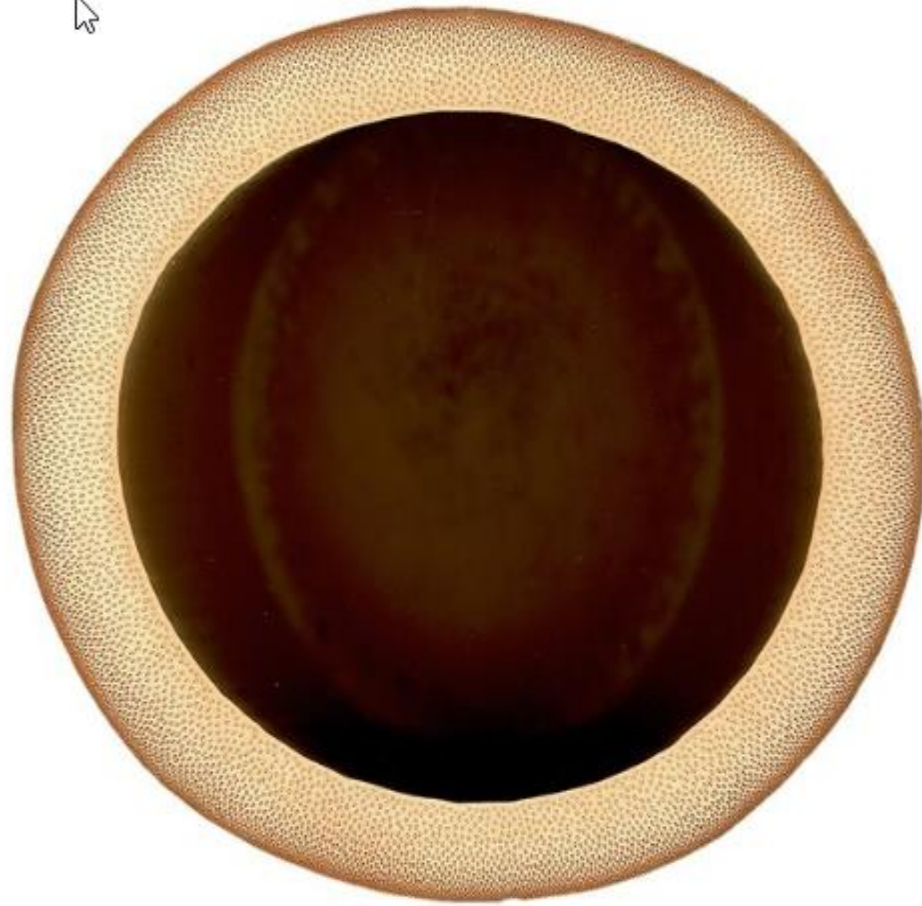


The innovation

# Bamboo Industrialization









# First Generation Bamboo Development



plain  
pressed



© BambooImport.com

side  
pressed





Sawing to strips

Machine Splitting to  
Strips





# Second Generation Bamboo Development









# How we make the new Furled Bamboo Format

*Our patented unfurl process creates a unique, wide one piece bamboo sheet. This is then utilized in a myriad of products further enhanced with unique styling and surface treatments.*

- » One Piece Bamboo Face
- » Unique Bamboo Cross Knuckle
- » No Glue Lines on Cutting Surface
- » From rapidly renewable & sustainable 100% natural bamboo

Third  
Generation  
Bamboo Development





# Transformation is Innovation

1. Transformation from Handcraft to Industrialization
2. Transformation from flooring to Panels, to Veneers, to Ceiling panel to wall panels and etc...
3. Transformation of Processing Technology
4. Transformation from the Interior Application to the Exterior





# dasso.Flooring

Solids & Engineered bamboo in traditional, stranded and our proprietary pressed construction































A close-up, slightly dimly lit photograph of a modern outdoor sofa. The sofa is constructed from light-colored wood, possibly bamboo or teak, with a slatted backrest. It is upholstered with thick, white rectangular cushions. Two large, white square pillows are propped up against the backrest. The overall aesthetic is clean and minimalist. The text 'dasso.Furnishings' is overlaid in the center in a white, sans-serif font.

# dasso.Furnishings

Furniture, bamboo, cutting boards



























The background of the image is a dark brown surface with a repeating pattern of stylized, light yellow-green bamboo leaves. The leaves are elongated and pointed, arranged in a way that suggests growth and movement. The lighting is soft, creating a warm and natural feel.

# **dasso.Elements**

Bamboo Veneers, Plywoods, and Countertops





刨切薄竹生产  
Production of bamboo veneer













宝马X5、X6系列汽车内饰

Automotive Interior of BMW X5 and X6 series





*Toyota Showroom, Netherlands*





*Bamboo Kitchen in Thousand Island Villa*





*Bamboo Cabinets*



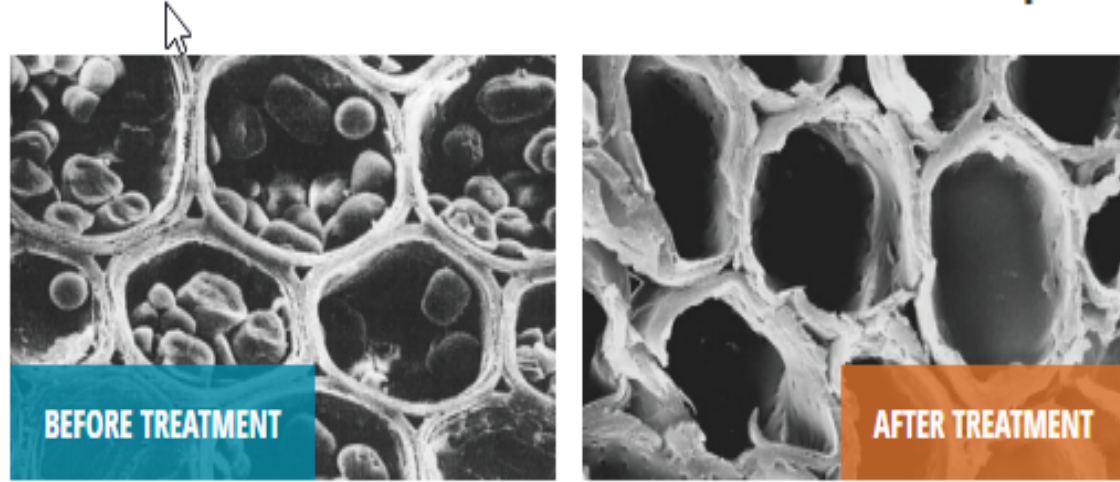
A photograph of outdoor furniture cushions on a wooden deck. In the center is a white rectangular cushion. To its right is a teal-colored curved cushion with a white base. To the left is a grey and white striped rectangular cushion. The background is a dark brown wooden deck.

# **dasso.XTR**

Fused Bamboo® for Exterior Use



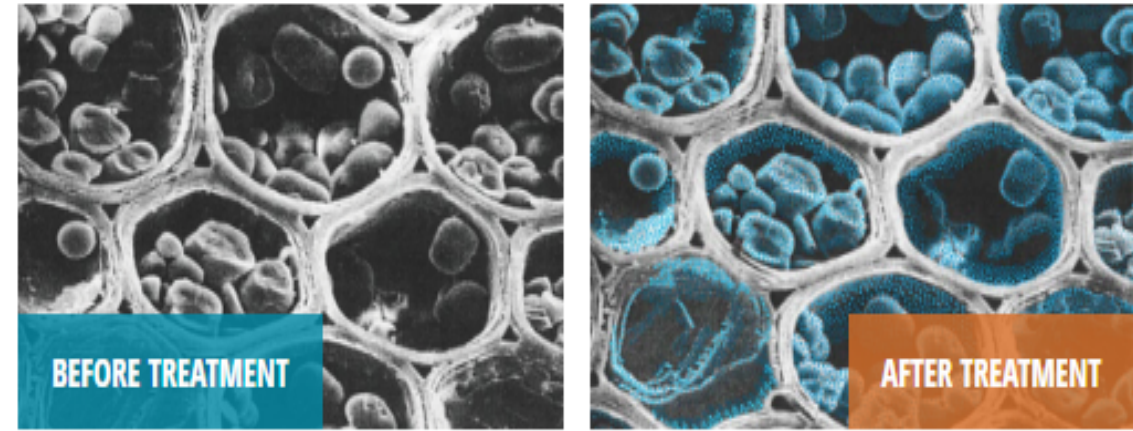
## What are the principles behind the technology?



### Thermal Fused Technology **CLASSIC** Series

#### Extracted & fused to last

We extract all the nutrients (which include sugar and starch) from the bamboo, impregnate it with phenolic resin (the same resin found in bowling balls), then compress it 2:1 to form Fused Bamboo. Because Fused Bamboo does not contain any more nutrients, it will not attract bacteria, fungus, molds or insects; the fiber does not rot under exposed environments.



### CeramiX<sup>®</sup> Fused Technology **EPIC** Series

#### Crystalized & fused to last

We crystalize the fibers with CeramiX<sup>®</sup> nano particle, impregnate it with phenolic resin (the same resin found in bowling balls), then compress it 2:1 to form Fused Bamboo. Because Fused Bamboo is now fully impregnated with CeramiX<sup>®</sup> nano particle that crystalizes the nutrients from attracting bacteria, fungus, molds or insects, the fiber does not rot under exposed environments.



























千島湖珍珠广场

















The background image shows a curved architectural surface, likely a ceiling or wall, with a fine, ribbed texture. A prominent yellow structural beam runs diagonally across the frame. Several circular light fixtures are embedded in the surface. The overall color palette is warm, with browns and yellows.

**dasso.Architectural**

Ceiling & Wallcoverings









← Baggage and way out  
Equipajes y salida

Gates  
Puertas J58 and J59  
Smile K

Gates  
Puertas J54 and J57







→  Gates  
Puertas     
   



889



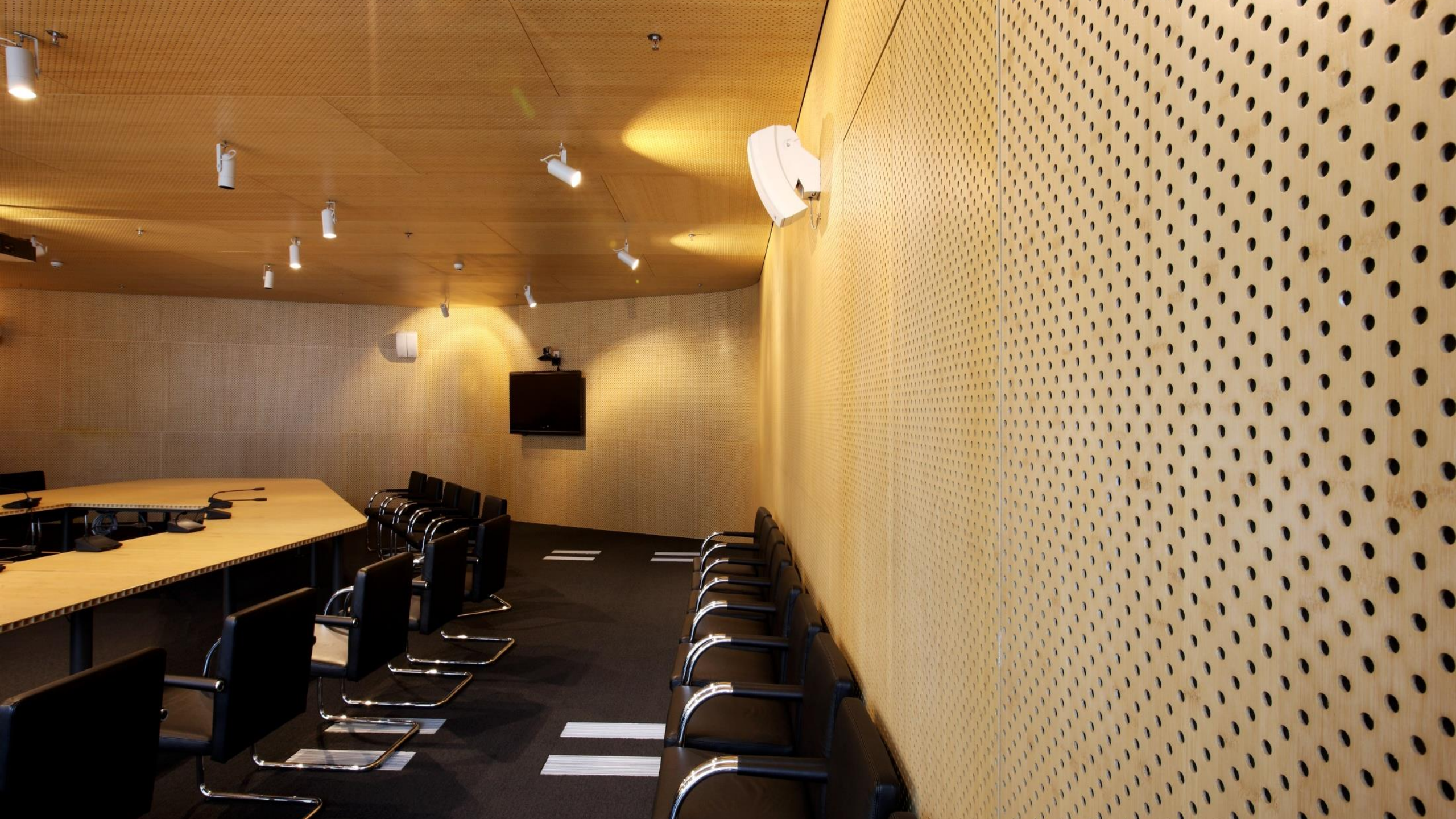






















































多功能  
Studio Theater



省会大剧场

Provincial Grand Theater














# **dasso.Innovations**

Industrial & Commercial Applications

















800KW竹制风电叶片安装  
Installation of 800KW bamboo wind turbine blades



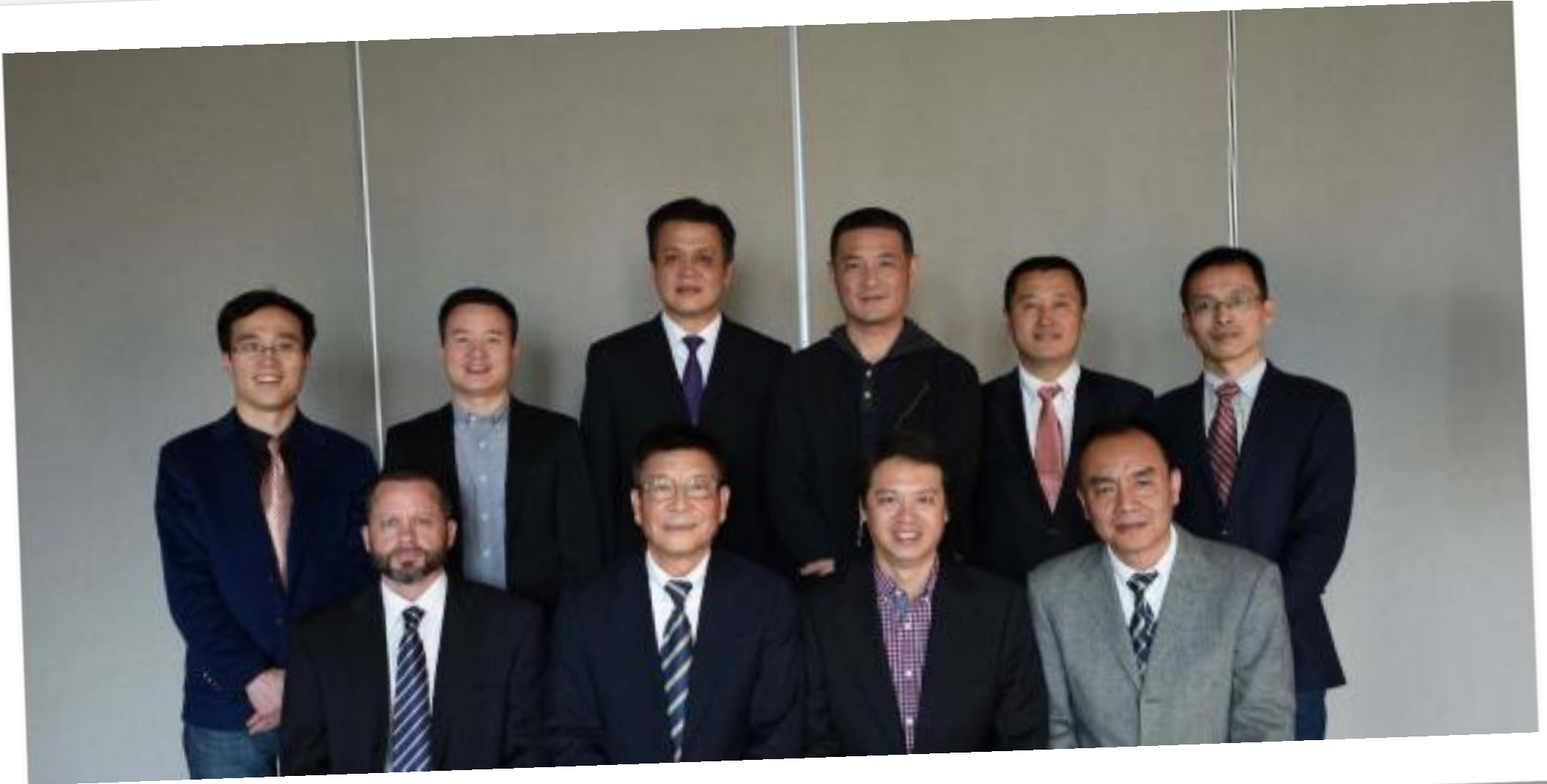


800KW竹制风电叶片安装

Installation of 800KW bamboo wind turbine blades



And a new Middle Management Team



**Thank you from dasso team!**



# FUSED BAMBOO®

decking, siding, & more



# What is dasso.XTR?

Fused Bamboo<sup>®</sup> that's strong enough for exterior use

XTR stands for  
**eXTeRior**





# What is Fused Bamboo<sup>®</sup>?

Bamboo fibers are fused into panels with resin using our Patented Process

87% natural moso bamboo fiber and 13% of binder





# dasso.XTR Fused Bamboo®

## Comparison Chart

Competitive Material	dasso.XTR	Ipe	Meranti Mahogany	Southern Yellow Pine	Western Red Cedar
Density	1,100 kg/m3	1,050 kg/m3	730 kg/m3	590 kg/m3	410 kg/m3
Strength (psi)	20,100	25,400	12,700	14,200	7,500
Stiffness (1,000psi)	2,103	3,140	1,612	1,510	930
Janka Hardness (lbs)	3,820	3,060	780	750	350
Insect & Decay Resistance	High	High	Low	Low	High (Heartwood only)





# How is Fused Bamboo<sup>®</sup> Produced?



From a natural  
bamboo forest



Stalks selectively  
cut every 5-7 years



We prepare the  
bamboo fiber



Fuse it into strong  
panels with our  
Patented Process

**STRONG**  
**DURABLE**  
**SUSTAINABLE**  
**CLASS-A FIRE RATED**



Panels are milled into decking, RainClad<sup>®</sup> siding,  
porch flooring, lumber & more!



# How is Fused Bamboo<sup>®</sup> Produced?



From a natural bamboo forest



Stalks age 5 – 7 years selected and cut



Culms cut to length of 6 1/2ft (2,000mm)



Splits into stripe and deskin



Stripes crush into strand of 1/64" (3mm) diameter



Drying and "de-nutrients"



Binder Impregnation (meaning soak in binder thoroughly)



Drying to desire moisture content



Fused with thermal-press into panels



Cut-to-size and route to finish products



Prime and dry ready for packaging



Finished Boards



# Features & benefits

- Beautiful & Durable
- Modular Designed
- Sustainable Resource
- Easy to Transport and Install
- Class A Fire Rated





# Who is the dasso group?

global innovator  
of moso bamboo

- family owned
- formed by Larry Lin
- established in 1993
- 10 manufacturing facilities
- 1000 employees
- a dedicated company focused on R&D of moso bamboo





# dasso Products

- dasso.Flooring  
Interior Flooring
- dasso.XTR  
Exterior Usage
- dasso.Elements  
Interior Design Materials
- dasso.Furnishings  
Furniture, Kitchenware
- dasso.Architectural  
Custom Design
- dasso.Innovations  
Innovative bamboo  
Products



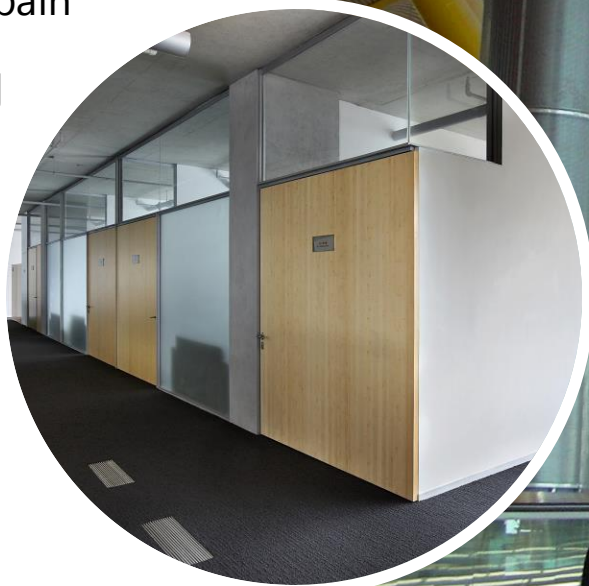


# Prestigious dasso Projects

- **Bamboo Wind Turbine**  
Inner Mongolia, China
- **Vinke Headquarters**  
Shenzhen, China
- **Bamboo Ceiling**  
Madrid Berajas Airport, Spain
- **RainClad® Siding**  
Charleston, SC USA
- **Boardwalk**  
Banana Island  
Doha, Qatar



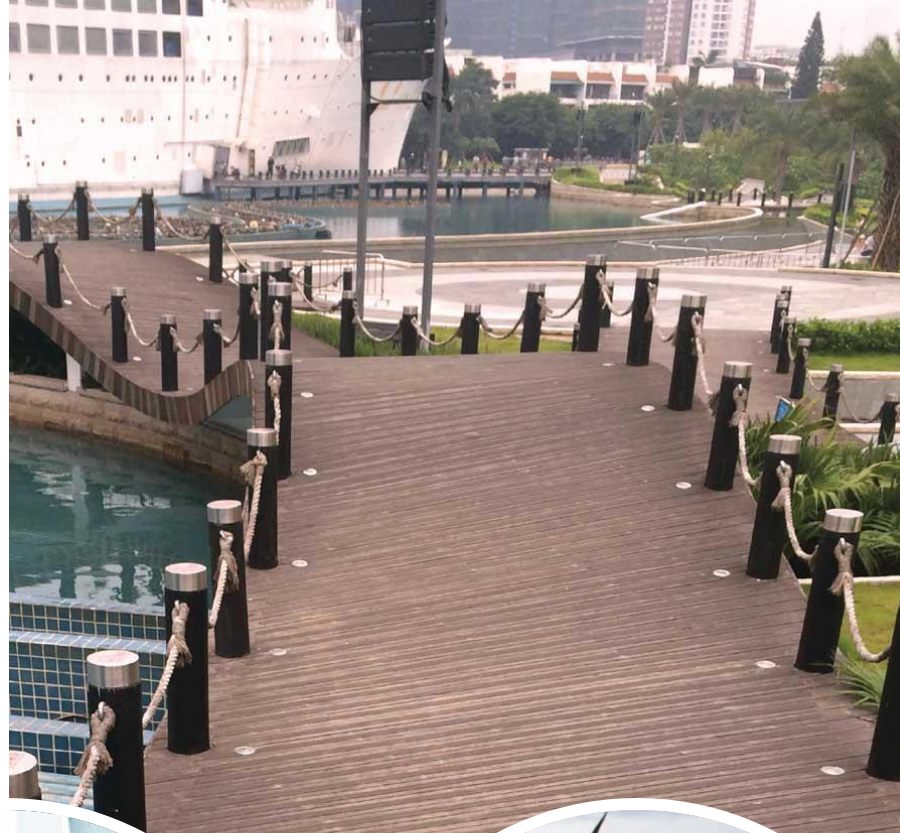
View More:  
[dassoXTR.com/Gallery.aspx](http://dassoXTR.com/Gallery.aspx)





# Fused Bamboo<sup>®</sup> Products

- Decking 1" or 20mm  
Residential & Light Commercial
- Decking 2" or 40mm  
Commercial & Boardwalk
- RainClad<sup>®</sup> Siding
- Porch Flooring
- Deck Tiles
- Lumber & Panels





# Fused Bamboo® Decking



## END MATCHED

Installation on or off joists



## REVERSIBLE FACES

Smooth / Reeded



## 2-SIDE GROOVED

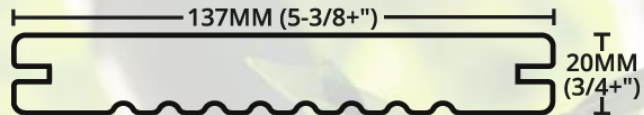
Use Hidden Fasteners



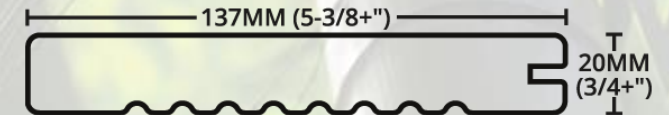
## 1-SIDE GROOVED

Edging & More

## 1 x 6 Double Groove XTR-DK20-G2-PP



## 1 x 6 Single Groove XTR-DK20-G1-PP



## RECOMMENDED SPAN 12", 16", 24"

Off-joist installation only on span of 16" or less.

End-matched joint withstands a load of 100PSF





# Fused Bamboo<sup>®</sup> Commercial Decking



**END MATCHED**



**REVERSIBLE FACES**  
Smooth / Reeded

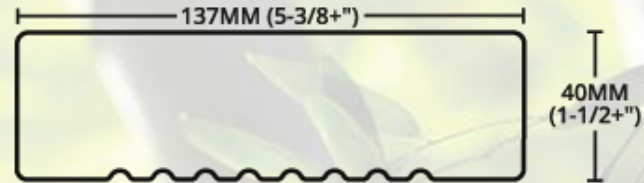


**NO SIDE GROOVE**

## **HEAVY DUTY USAGE**

- Boardwalks
- Marinas
- Piers

2 x 6 Commercial Grade Decking  
**XTR-DK40-G0-PP**



**RECOMMENDED SPAN** 12", 16", 24" and 36"  
On-joist installation and face screw only





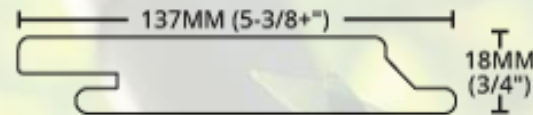
# RainClad® Siding



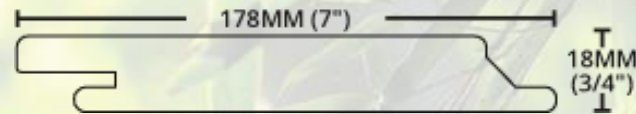
**END MATCHED**  
For Modular Fitting

- Available in Sheathing or Batten Installation
- Designed with buffer and thermal insulation for the building
- Speedy installation with Fastrack and Fastener

1 x 6 RainClad®  
**XTR-SID18-137TG-PP**



1 x 7 RainClad®  
**XTR-SID18-137TG-PP**





# Fused Bamboo<sup>®</sup> Porch Flooring



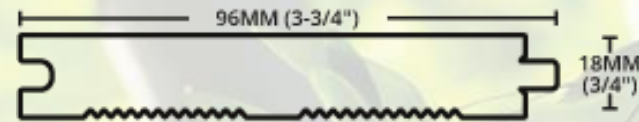
## REVERSIBLE FACES

Smooth / Reeded



## TONGUE & GROOVE

## Porch Flooring XTR-POR18-96-PP



## WHERE TO USE

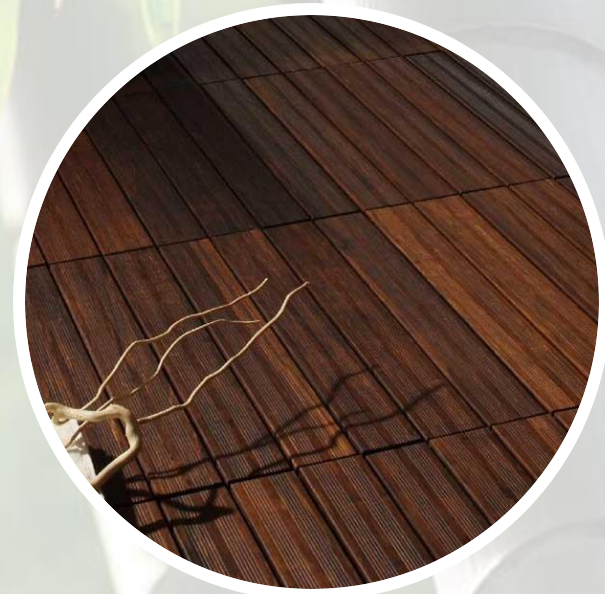
- Covered Walkways
- Covered Porches





# Fused Bamboo<sup>®</sup> Deck Tiles

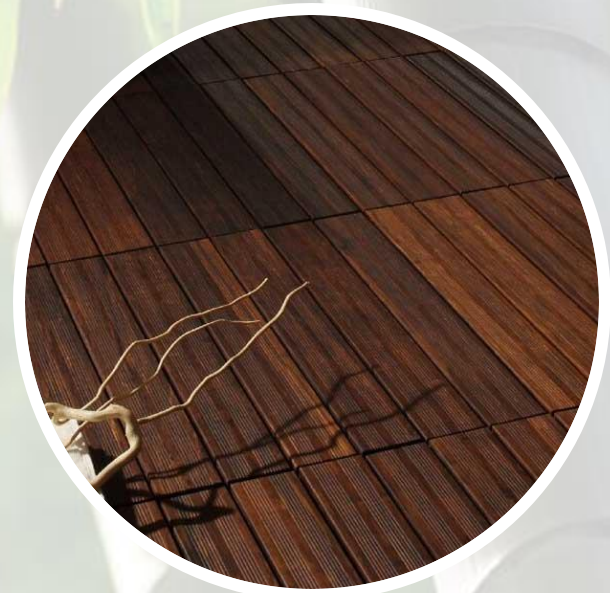
- Precisely Milled in Modular Design
- Speedy Installation





# Fused Bamboo<sup>®</sup> Deck Tiles

- Precisely Milled in Modular Design
- 5" Wide Strips for High-end look
- Locking Mechanism to prevent blow-off
- Speedy Installation





# Lumber & Panels

1 x 8 S4S Lumber  
**XTR-LUM20-205**

1" Half Panel  
**XTR-PAN20H**

2 x 6 S4S Lumber  
**XTR-LUM40-152**

2" Half Panel  
**XTR-PAN40H**

## HOW TO USE

- Furnishings
- Privacy screens
- Fences & gates
- Railings
- More...





# Lumber & Panels

- Trim Projects
- Site Furnishings
- Privacy Screens
- Fences & Gates
- Railings
- and More





# Sustainable Resource

- Anatomy
- Physiology
- Growth





# Physiology

- 40 culms of bamboo will absorb the same amount of CO<sub>2</sub> released by an individual in a year





# Growth

- Bamboo has multiple growth points as opposed to trees with only 1 growth point at the apex of the plant
- In a good spring, bamboo shoots can grow up to 1 meter (3 feet) in 24 hours

